

MAP ANALYSIS - COMPARISON

Late Friday November 5, Utah’s Legislative Redistricting Committee released four proposed maps – one each for congressional, state senate, and state house, and state school board. You can [view maps here](#). Unlike the Independent Redistricting Commission, the maps were drawn behind closed doors, and Utahns were given less than three days – over a weekend – to review and comment on the maps.

In addition to a transparent process, the Utah Independent Redistricting Commission’s maps meet robust criteria as required by state statute. These include keeping counties and cities intact whenever possible and a prohibition from purposeful or undue favoring or disfavoring of politicians and political parties. [Read and learn about the criteria here](#).

The Independent Redistricting Commission submitted a 196-page report with their maps that detail how their maps perform on the criteria. [You can access the report here](#). The Legislative Redistricting Committee did not provide a report. In order to give Utahns a method to compare maps, Better Boundaries Utah has worked with the Independent Redistricting Commission’s mapping experts to assess the maps against key criteria.

We support the adoption of Independent Redistricting Commission maps for congress, state senate, state house, and state school board because the maps were drawn in a transparent process, without political and incumbent data, and meet the criteria as set out by state statute.

Congressional

The Legislative Redistricting Committee’s congressional map splits counties and municipalities at a significantly higher rate than the Independent Commission’s maps.

Counties	Splits	Pieces
Independent Commission Orange	4	9
Independent Commission Purple	6	12
Independent Commission SH2	4	8
<i>Legislative</i>	5	12
Municipalities	Splits	Pieces
Independent Commission Orange	13	26
Independent Commission Purple	8	16
Independent Commission SH2	7	14
<i>Legislative</i>	15	32

The co-chairs of the Legislative Redistricting Committee have said that an urban-rural mix is a priority in their congressional map: “The congressional map we propose has all four delegates

representing both urban and rural parts of the state... We are one Utah and believe both urban and rural interests should be represented in Washington, D.C. by the entire federal delegation.”

However, the Independent Commission map SH2 best assures an urban-rural mix:

Average Density	
Independent Commission SH2	49.0
Legislative	76.4

Importantly, the Legislative Redistricting Committee map substantially favors the republican party. When a robust partisan test is conducted, using ten different Utah elections and with an ensemble of over 100,000 maps, the Legislative Redistricting Committee map heavily favors Republicans.

- Not once in ten different election patterns would the Legislative Redistricting Committee’s map give a single Democratic seat, though Democratic vote share is over 25% all ten times.
- The Legislative Redistricting Committee’s map fails to have a single contest within a six-point margin in any of its four districts in all ten elections.
- By contrast, all Independent Commission maps as well as over 99.5% of the random plans drawn by computer have at least one competitive race.

In summary, the Legislative Redistricting Committee’s congressional maps is partisan gerrymandered to favor the Republican party, splits counties and cities unnecessarily, and does not perform well at an urban-rural mix.

State Senate

The Legislative Redistricting Committee’s senate map splits counties and municipalities at a significantly higher rate than the Independent Commission’s maps.

Counties	Splits	Pieces
Independent Commission Green	7	36
Independent Commission Orange	11	44
Independent Commission Purple	10	44
<i>Legislative</i>	<i>15</i>	<i>56</i>
Municipalities	Splits	Pieces
Independent Commission Green	32	70
Independent Commission Orange	37	85
Independent Commission Purple	31	67
<i>Legislative</i>	<i>47</i>	<i>116</i>

The Legislative Redistricting Committee’s map is politically neutral in terms of favoring or disfavoring a political party. We know that incumbent data and consideration were used by the Legislative Redistricting Committee, unlike the Independent Commission.

In summary, the Legislative Redistricting Committee's senate maps unnecessarily splits counties and cities, but is generally partisan neutral.

State House

The Legislative Redistricting Committee's house map splits counties at a low rate; additionally, it performs well at municipality splits, although there are better performing Independent Commission maps.

Counties	Splits	Pieces
Independent Commission Green	14	89
Independent Commission Orange	20	110
Independent Commission Purple	16	94
<i>Legislative</i>	<i>14</i>	<i>86</i>
Municipalities	Splits	Pieces
Independent Commission Green	51	141
Independent Commission Orange	61	189
Independent Commission Purple	46	134
<i>Legislative</i>	<i>60</i>	<i>183</i>

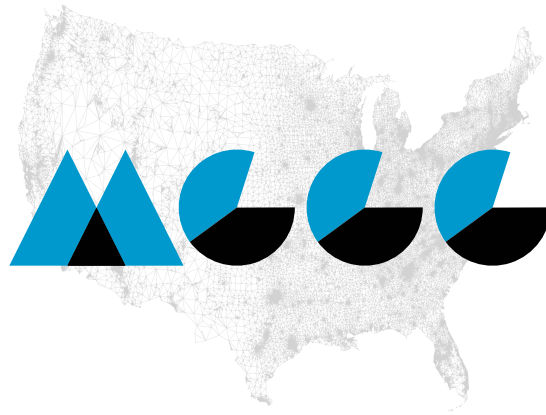
Importantly, the Legislative Redistricting Committee map substantially favors the Republican party. When a robust partisan test is conducted, using ten different Utah elections and with an ensemble of over 100,000 maps the Legislative Redistricting Committee map favors Republicans.

- In several elections, it has off-the-scales low Democratic performance, with fewer seats than were ever found with partisan-blind plans.
- While 59 out of 75 districts are always Republican, just six are consistently Democratic.
- It's not just Republican-tilted, but is filled with safe seats, making it unresponsive to the will of voters.

In summary, the Legislative Redistricting Committee's house map is partisan gerrymandered to favor Republicans, although it doesn't overly split counties and cities.

The State School Board analysis will be forthcoming.

Plan Evaluation in Utah

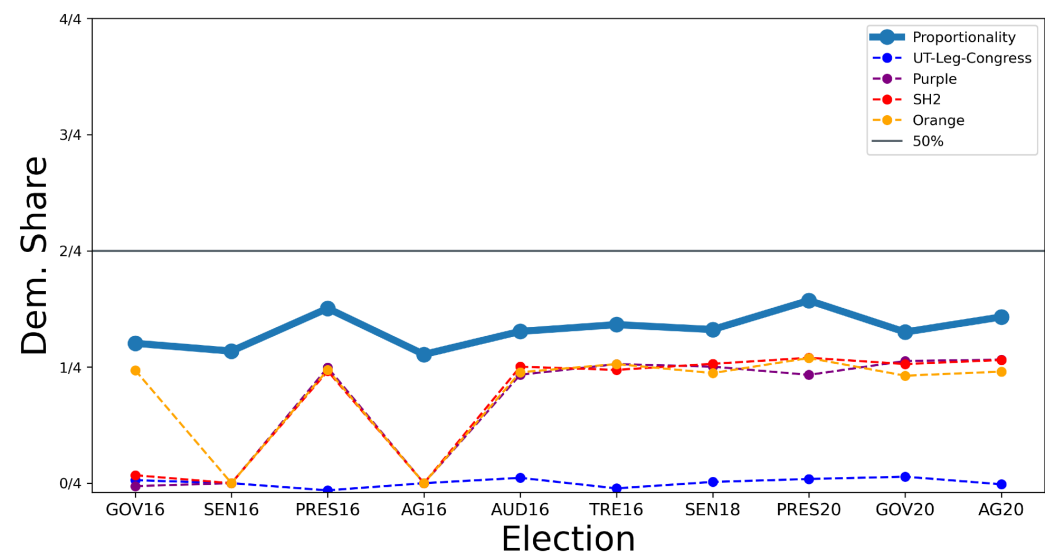
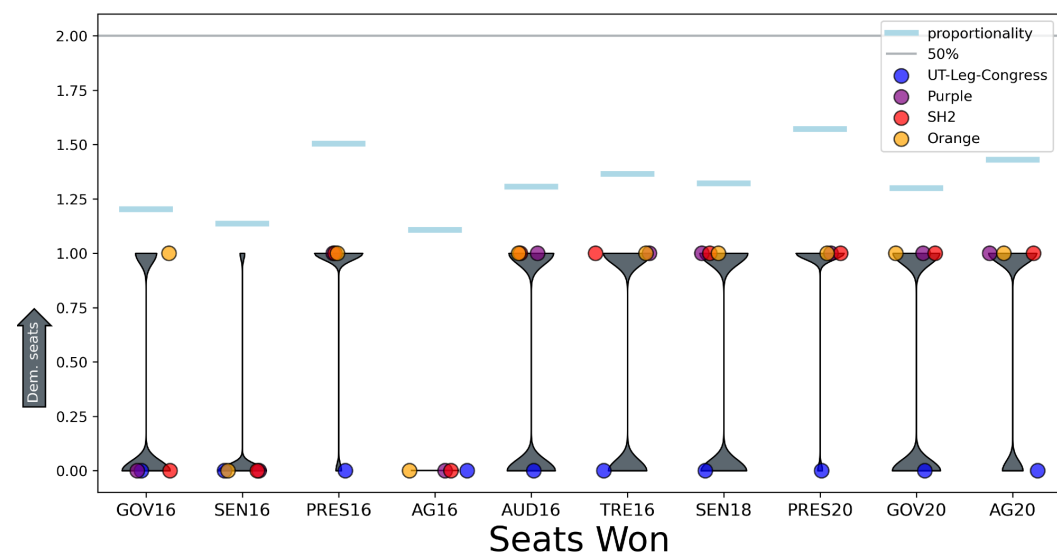


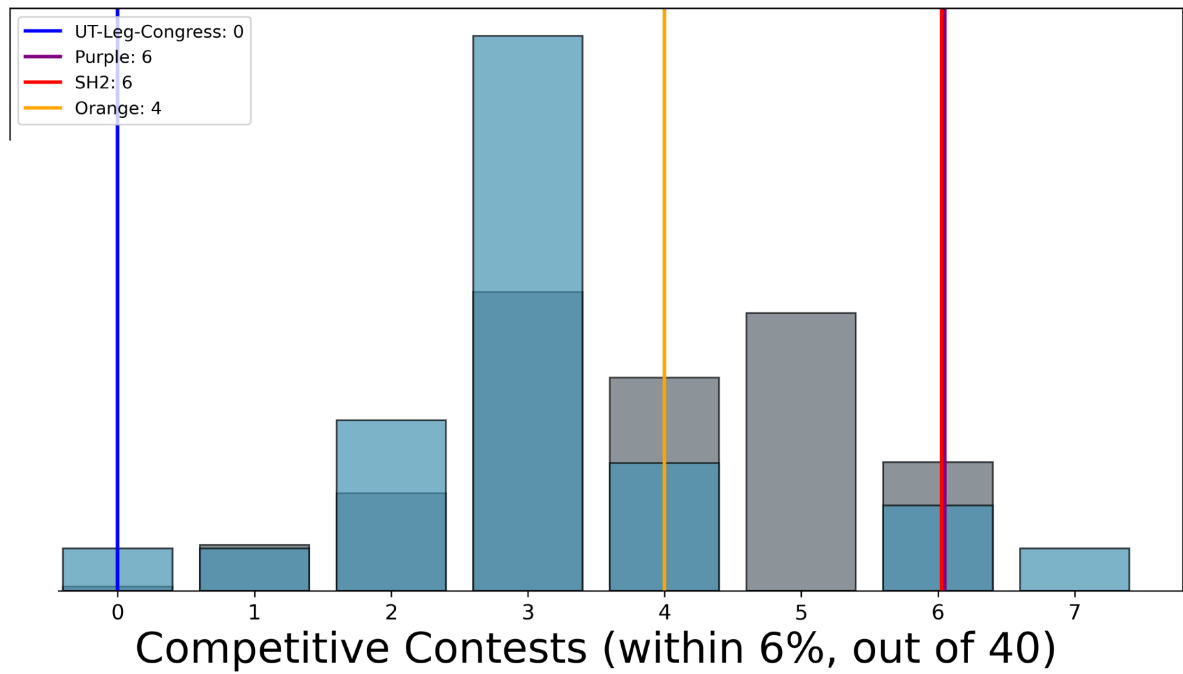
MGGG Redistricting Lab and Tyler Jarvis

Districting Criteria Table for Final UIRC Plans

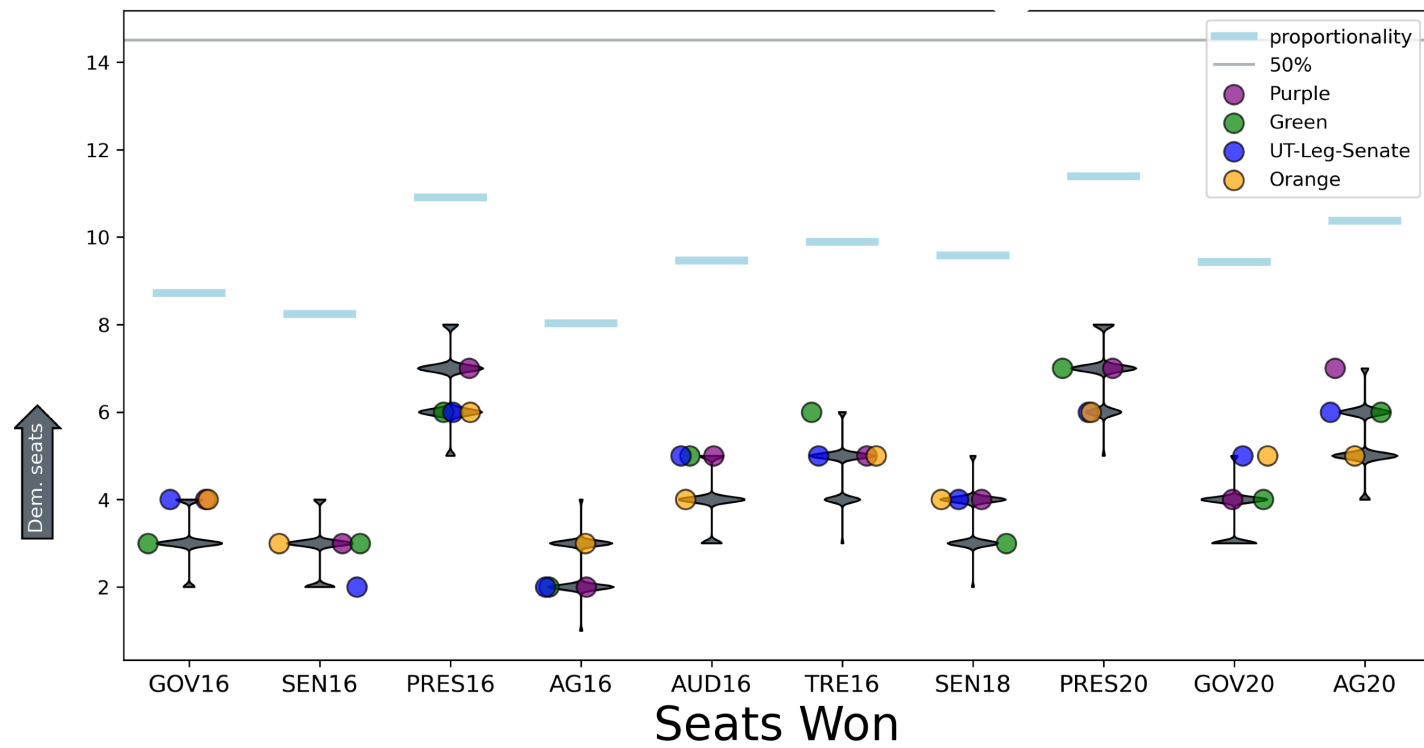
Level	PLAN	Cut Edges on Blocks	Avg Polsby Popper	Max Pos Pop Dev	District	Max Neg Pop Dev	District	# Split VTDs	Max/Min District Density	Avg Density (people per square mi)	# Split Counties	County Pieces	# Split Towns	Town Pieces	# COIs preserved
CD	Orange	780	0.440	2	4	-1	3	42	147	829.6	4	9	13	26	417
CD	Purple	981	0.276	0	-	0	-	37	63	451.0	6	12	8	16	431
CD	SH2	1029	0.376	0	-	0	-	8	3	49.0	4	8	7	14	427
CD	Leg	1158	0.428	0	-	0	-	48	10	76.4	5	12	15	32	
SD	Green	3816	0.327	1415	9	-1971	12	109	1641	1475.4	7	36	32	70	283
SD	Orange	4048	0.329	95	3	-95	22	155	1104	1493.1	11	44	37	85	252
SD	Purple	3372	0.361	465	3	-528	27	128	1499	1482.6	10	44	31	67	257
SD	Leg	3933	0.362	1971	8	-2047	21	155	1311	1371.5	15	56	47	116	
HD	Green	6385	0.357	975	62	-896	24	266	4646	1962.9	14	89	51	141	202
HD	Orange	7408	0.302	139	20	-98	30	388	3392	2136.8	20	110	61	189	188
HD	Purple	6478	0.332	324	9	-659	63	285	7180	2087.5	16	94	46	134	209
HD	Leg	5897	0.401	1769	71	-2010	69	214	4647	1857.9	14	86	60	183	
SBD	Green	2300	0.310	1914	15	-1371	13	73	1112	1083.9	6	20	19	39	335
SBD	Orange	2688	0.322	65	3	-97	11	96	941	982.8	9	29	26	56	330
SBD	Purple	2437	0.269	1378	3	-1951	12	26	633	973.0	4	16	23	49	381
		OUT OF 182,780									OUT OF 29		OUT OF 252		OUT OF 590

Congress





Senate



House

